

Hot Melt Glue Gun

INSTRUCTION MANUAL GLUE GUN



△ IMPORTANT:

Read this instruction manual before operating this product.
Keep the instruction manual for future reference.



Made in China

General Power Tool Safety Warnings

⚠ WARNING: Read all safety warnings, instructions, illustrations and specifications provided with this power tool. Failure to follow all instructions listed below may result in electric shock, fire and/or serious injury. Save all warnings and instructions for future reference. The term "power tool" in the warnings refers to your mains-operated (corded) power tool or battery-operated (cordless) power tool.

1) Work area safety

- Keep work area clean and well lit. Cluttered or dark areas invite accidents.
- Do not operate power tools in explosive atmospheres, such as in the presence of flammable liquids, gases or dust. Power tools create sparks which may ignite the dust or fumes.
- Keep children and bystanders away while operating a power tool. Distractions can cause you to lose control.

2) Electrical safety

- Power tool plugs must match the outlet. Never modify the plug in any way. Do not use any adapter plugs with earthed (grounded) power tools. Unmodified plugs and matching outlets will reduce risk of electric shock.
- Avoid body contact with earthed or grounded surfaces, such as pipes, radiators, ranges and refrigerators. There is an increased risk of electric shock if your body is earthed or grounded.
- Do not expose power tools to rain or wet conditions. Water entering a power tool will increase the risk of electric shock.
- Do not abuse the cord. Never use the cord for carrying, pulling or unplugging the power tool. Keep cord away from heat, oil, sharp edges or moving parts. Damaged or entangled cords increase the risk of electric shock.
- When operating a power tool outdoors, use an extension cord suitable for outdoor use. Use of a cord suitable for outdoor use reduces the risk of electric shock.
- If operating a power tool in a damp location is unavoidable, use a residual current device (RCD) protected supply. Use of an RCD reduces the risk of electric shock.

3) Personal safety

- Stay alert, watch what you are doing and use common sense when operating a power tool. Do not use a power tool while you are tired or under the influence of drugs, alcohol or medication. A moment of inattention while operating power tools may result in serious personal injury.
- Use personal protective equipment. Always wear eye protection. Protective equipment such as a dust mask, non-skid safety shoes, hard hat or hearing protection used for appropriate conditions will reduce personal injuries.
- Prevent unintentional starting. Ensure the switch is in the off-position before connecting to power source and/or battery pack, picking up or carrying the tool. Carrying power tools with your finger on the switch or energizing power tools that have the switch on invites accidents.
- Remove any adjusting key or wrench before turning the power tool on. A wrench or a key left attached to a rotating part of the power tool may result in personal injury.
- Do not overreach. Keep proper footing and balance at all times. This enables better control of the power tool in unexpected situations.
- Dress properly. Do not wear loose clothing or jewellery. Keep your hair and clothing away from moving parts. Loose clothes, jewellery or long hair can be caught in moving parts.
- If devices are provided for the connection of dust extraction and collection facilities, ensure these are connected and properly used. Use of dust collection can reduce dust-related hazards.
- Do not let familiarity gained from frequent use of tools allow you to become complacent and ignore tool safety principles. A careless action can cause severe injury within a fraction of a second.

4) Power tool use and care

- Do not force the power tool. Use the correct power tool for your application. The correct power tool will do the job better and safer at the rate for which it was designed.
- Do not use the power tool if the switch does not turn it on and off. Any power tool that cannot be controlled with the switch is dangerous and must be repaired.
- Disconnect the plug from the power source and/or remove the battery pack, if detachable, from the power tool before making any adjustments, changing accessories, or storing power tools. Such preventive safety measures reduce the risk of starting the power tool accidentally.
- Store idle power tools out of the reach of children and do not allow persons unfamiliar with the power tool or these instructions to operate the power tool. Power tools are dangerous in the hands of untrained users.
- Maintain power tools and accessories. Check for misalignment or binding of moving parts, breakage of parts and any other condition that may affect the power tool's operation. If damaged, have the power tool repaired before use. Many accidents are caused by poorly maintained power tools.
- Keep cutting tools sharp and clean. Properly maintained cutting tools with sharp cutting edges are less likely to bind and are easier to control.

g) Use the power tool, accessories and tool bits etc. in accordance with these instructions, taking into account the working conditions and the work to be performed. Use of the power tool for operations different from those intended could result in a hazardous situation.

h) Keep handles and grasping surfaces dry, clean and free from oil and grease. Slippery handles and grasping surfaces do not allow for safe handling and control of the tool in unexpected situations.

5) Service

a) Have your power tool serviced by a qualified repair person using only identical replacement parts. This will ensure that the safety of the power tool is maintained.

Special Warnings for Glue Gun

1) Do not operate the product if it is in any way defective! Disconnect the product from the power supply before performing any adjustments, maintenance, or storage.

2) Workplace safety. Ensure that the workplace is safe, it must be clean and well-lit. Poor lighting and cluttering of the workplace can lead to accidents.

3) Wear all personal protective equipment (goggles, respiratory protection, gloves) depending on the working conditions and the materials to be handled.







4) Do not leave the product unattended during operation. Do not operate the product under the influence of alcohol or medication that may affect your reaction time.

5) Do not operate the product when you are tired or have no control over the work process.

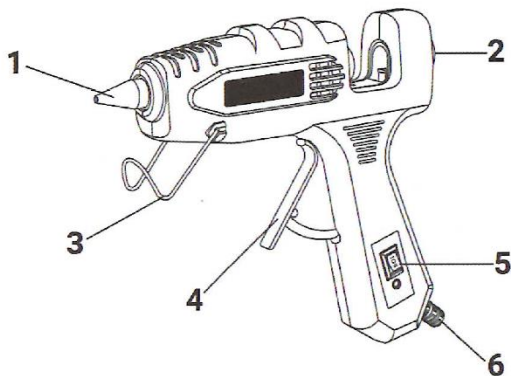
6) Do not use caustic chemicals and liquids to clean the product.

Symbol Explanation

In this manual and/or on the machine the following symbols are used:

	Denotes risk of personal injury or damage to the tool.
	Read instruction manual before use.
	Do not dispose of power tools and batteries/rechargeable batteries into household waste! Dispose the products according to the regulation and requirement of local council.
	Double insulation. Class II device. The device must not be earthed.
	Wear hearing protection. Wear eye protection. Wear breathing protection.
	Wear gloves.

Parts Description



1. Nozzle
2. Glue stick hole
3. Stand bracket
4. Trigger
5. Switch
6. Cable

Product Specifications

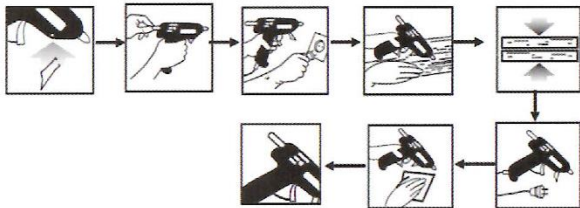
Model Number	DKGG100T6
Voltage	110-240V~50/60Hz
Power	100W
Operating temperature	220°C

Intended use

The product is designed for stable fixing of different types of materials (wood, ceramics, plastic, cardboard) to the surface by melting the adhesive rod with its subsequent heating. Used for decoration, manufacture of packaging and souvenir products.

Operation

⚠ WARNING: Always disconnect the product from the mains before adjusting or servicing.



- 1) Insert the stand bracket into the hole in the front of the glue gun.
- 2) Insert the glue stick and then pull the trigger several times until the stick locks into place.
- 3) Bend the stand bracket forward. Insert the plug into the outlet, and then set the stand on a flat surface to allow the adhesive to heat up (2-3 minutes). It is recommended to place it on cardboard or a backing board.
- 4) Apply glue to the items to be bonded, pressing the trigger to squeeze out the glue. By varying the trigger force, you can adjust the amount of glue that comes out. The surfaces to be glued must be clean (if the gluing area is covered with grease, rust or other contaminants, the bonding strength will be impaired).
- 5) Press the surfaces to be joined together for 15 seconds.
- 6) When work is finished, disconnect the glue gun and place it on a stand to cool down for at least 10 minutes. If work is interrupted for more than 3 minutes, disconnect the gun from the power supply. Do not interrupt the operation when the gun is switched on.
- 7) When the gun has cooled down, wipe the adhesive off the nozzle thoroughly with a dry cloth. Store the gun in a cool, dry place out of the reach of children.
- 8) After the operation is complete, unused glue sticks can be left in the machine.

Maintenance

- 1) In case of adhesive residue sticking to the gun tip, wait until the gun has cooled down completely and remove the contamination mechanically.
- 2) In case of product failure, do not repair the product yourself, but contact a specialized service center.

Service Information

This tool is warranted to the original purchaser to be free from defect in materials and workmanship for a period of 30 days from the original purchase date.

If the tool should fail some day in spite of our quality controls and materials, only have it repaired by an authorized electrician or contact your local distributor or service agent.

The warranty will not apply to the following cases:

- (i) where this product has been subjected to misuse, abuse, accident or want of care;
- (ii) where this product has been used for a purpose for which it was not designed or is not suited;
- (iii) where the service of this product has been undertaken by a non-authorized person or company or if non-approved parts have been used.
- (iv) components that are subject to natural wear and tear caused by use in accordance with operating instructions.

Disposal



The machine and packaging should be sorted for environmental-friendly recycling. Do not dispose of power tools into household waste! Please recycle them at collection points provided for the purpose. Ask your local authority for information about recycling